

2008 AMA Doctoral Consortium Technology Information Sheet

Authentication Credentials

You have been provided with a User ID (PawPrint) and password for access to resources on the MU campus. Please keep this information handy if you intend to take advantage of these resources. When authenticating using these credentials, please note that the PawPrint is NOT case-sensitive, but the password is. Also, remember that you will need to specify a domain in most cases; this domain is **TIGERS**.

Internet/Email Kiosks

There are 12 computers (9 in the first floor Atrium, 3 on the lower level) at 4 separate kiosks provided to allow access to the World Wide Web. The primary intended use of these is to check email via Web mail clients and simple Web browsing. There are no applications on these computers other than a Web browser, and no printing capabilities. You will not need to log onto these computers themselves. However, when you log in to your email system, please remember that these are public computers so it is **VERY IMPORTANT THAT YOU LOG OUT** of your email system when you are finished. The easiest and simplest way to accomplish this is to close out the Web browser.

Application Kiosks

At the North end of the Lower Level are 12 application workstations. These computers provide Internet access, have the Microsoft Office 2007 suite installed, and are set to print on nearby printers (one on each side of the corridor). If you need to print, please note which printer your computer directs output marked with signage.

You will need to log into these application workstations using the credentials provided to you. When you are finished, please remember that it is **VERY IMPORTANT TO LOG OUT OF THE WORKSTATION**.

Wireless Access

Windows laptops:

To configure your Windows laptop for access to the MU Wireless Networks, please use the following procedure:

1. Go to Control Panel and open Network Connections (figure 1)

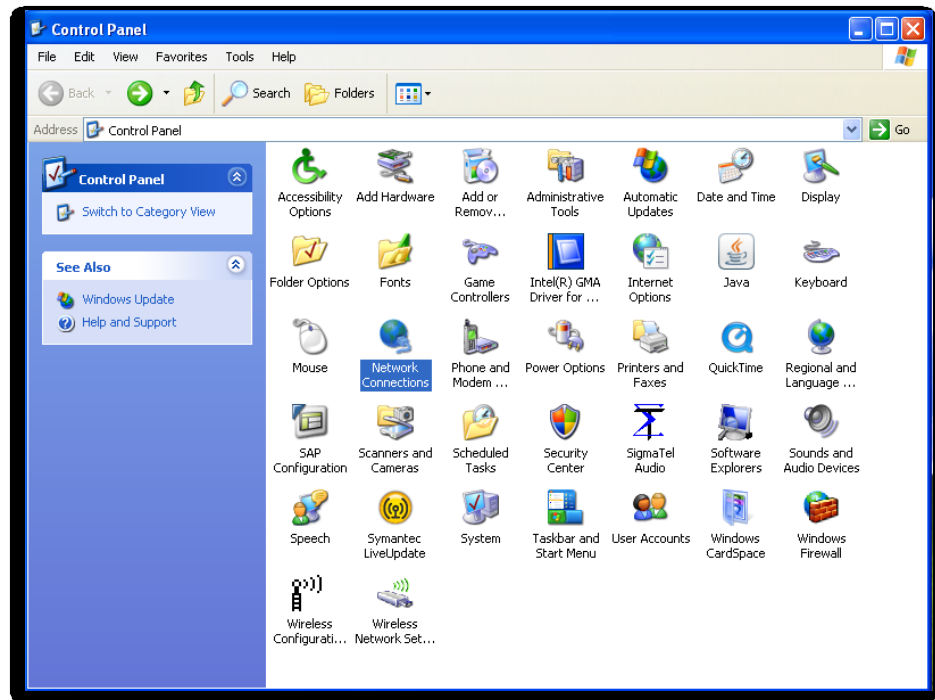


Figure 1

2. Find the Connection icon for your wireless adapter, right-click, and select properties.
3. Choose the Wireless Networks tab. Click "Add." (figure 2)

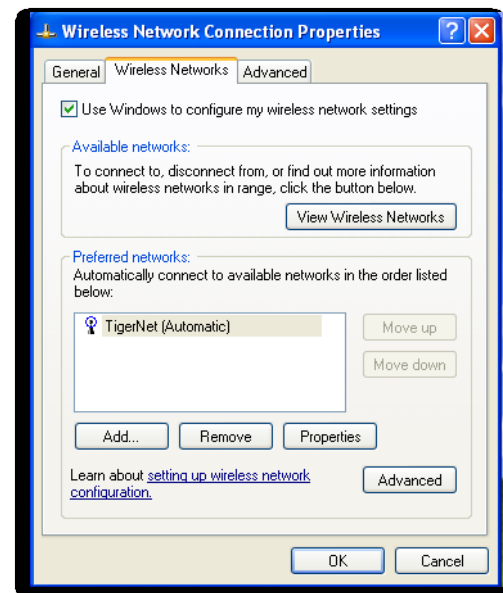


Figure 2

4. Select the "Association" tab. Enter "TigerNet1X" in the Network Name (SSID) field. Note that this field is case-sensitive. (figure 3)

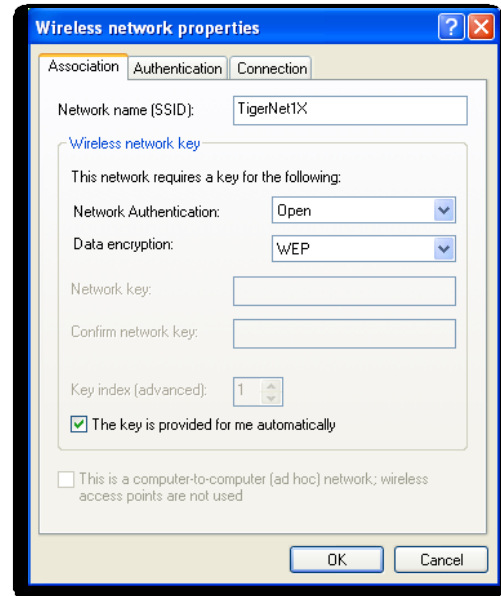


Figure 3

5. Select the "Authentication" tab. On the EAP type drop-down, choose "Protected EAP (PEAP)". (figure 4)

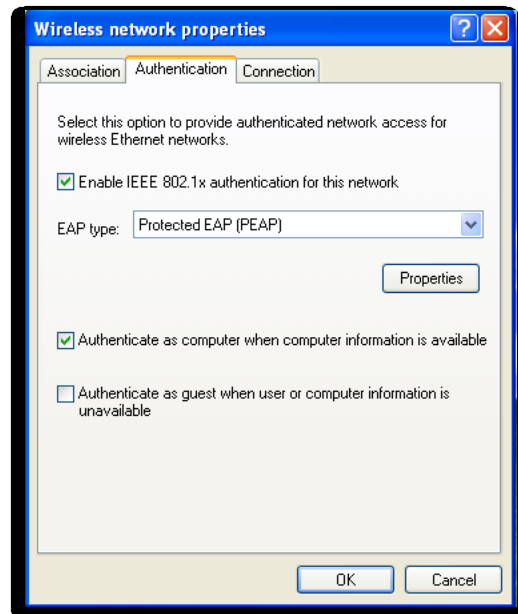


Figure 4

6. Click "Properties". Under "Trusted Root Certification Authorities" check the box next to "Class 3 Public Primary Certification Authority" and "Secure Server Certification Authority". (figure 5)

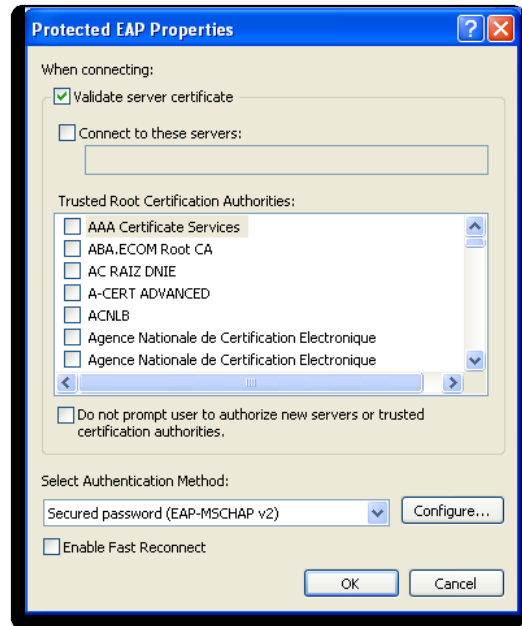


Figure 5

7. In the lower portion of the box labeled "Select Authentication Method:" be sure "Secured password (EAP-MSCHAP v2)" is selected, then click Configure.
8. Clear the checkbox next to "Automatically use my Windows logon...." (figure 6) Click OK to close all dialog boxes. Your computer will attempt to connect to the network.



Figure 6

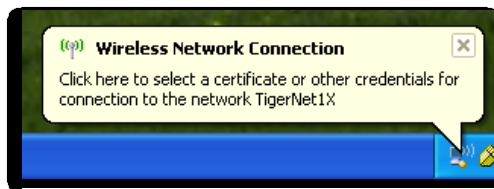


Figure 7

9. You should see a balloon on the system tray icon for your wireless adapter asking you to click to select a certificate or other credentials. Please click this balloon. In the window that opens, enter your user name (PawPrint provided to you), password, and logon domain (TIGERS). Click OK to complete the connection.
10. This network is available across campus, and should automatically connect from this point on.



Figure 8

MacOS X laptops:

Version 10.5.2 Leopard

1. From the **Apple** menu, select **System Preferences**.
2. Click **Network**.
3. Click **Airport**.
4. Click **Advanced**.
5. Click the + symbol to create a new preferred network.
6. Type **MizzouWireless** in the **Network Name** box.
7. Select **WPA-Enterprise** from the **Security** drop-down menu.
8. Type **umc-users\yourpawprint** in the User Name box.
9. Type **your password** in the Password box.
10. Click **Add**.
11. Click **OK**.
12. Click **Apply** and select **MizzouWireless** in the **Network Name** drop-down menu.
13. Click **Show Certificate**.
14. Click the **Trust** menu to expand it.
15. Select **Always Trust** in the **When using this certificate** drop-down menu.
16. Click **Continue**.
17. Type the **administrator user name** and **password** for your computer.
18. Click **OK**.

Version 10.4.9 Tiger

1. Open your **Hard Drive**. Open the **Applications** folder.
2. Double-click the **Internet Connect** icon.
3. Click the **AirPort** icon.
4. Verify that AirPort Power is **On**; if not click the **Turn AirPort On** button.
5. Select **MizzouWireless** in the **Network** menu.
6. Type **umc-users\yourpawprint** in the User Name box
7. Enter **YourPassword** in the **Password** field.
8. Select **Automatic** in the **802.1X Configuration** menu.
9. Check the **Remember password in my keychain** box.
10. Click **OK**.

Contact information if you have problems:

Andrew Kassel, System Support

308F Cornell Hall
Office: 573-884-8172
Mobile: 573-999-5303

Pedro (Poy) de Leon, User Support

308G Cornell Hall
Office: 573-882-2119
Mobile: 573-489-6553